

PART OF THE SE. 1/4, OF SECTION 3, T.5N., R.2W., S.L.B. & M.

690

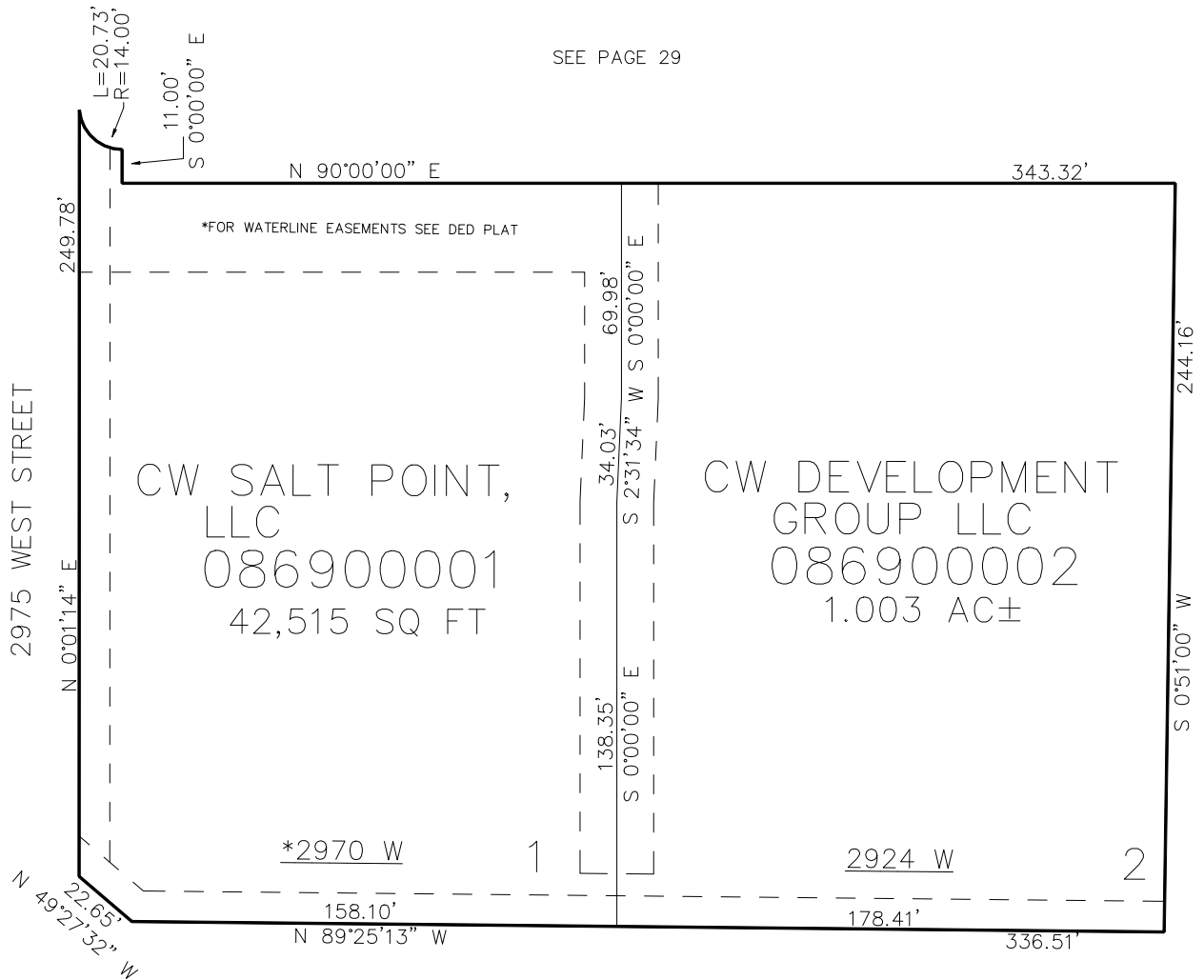
CW SALT POINT

IN WEST HAVEN CITY

TAXING UNIT: 215

SCALE 1" = 30'

SEE PAGE 29



10' UTILITY & DRAINAGE EASEMENTS EACH
SIDE OF PROPERTY LINES AS INDICATED
BY DASHED LINES EXCEPT AS OTHERWISE
SHOWN.

SEE PAGE 29

FOR COMPLETE SURVEY DATA SEE
ORIGINAL DEDICATION PLAT IN
BOOK 93, PAGE 59 OF RECORDS.

*ADDRESS AFFIDAVIT E#3339377